

BALDOR® • RELIANCE 

Product Information Packet

EM44402T-4

400HP,3570RPM,3PH,60HZ,L449TS,TEFC,F1

Part Detail							
Revision:	B	Status:	PRD/A	Change #:		Proprietary:	No
Type:	AC	Elec. Spec:	A44WG5211	CD Diagram:	416820-036	Mfg Plant:	
Mech. Spec:		Layout:	617435-427	Poles:	02	Created Date:	06-05-2017
Base:		Eff. Date:	08-15-2019	Leads:	3#1/0 (04 per group)		

Specs			
Catalog Number:	EM44402T-4	Frame Prefix:	L
Enclosure:	TEFC	Heater Indicator:	No Heater
Frame:	L449TS	Insulation Class:	F
Frame Material:	Iron	Inverter Code:	Not Inverter
Output @ Frequency:	400.000 HP @ 60 HZ	KVA Code:	G
Synchronous Speed @ Frequency:	3600 RPM @ 60 HZ	Motor Lead Quantity/Wire Size:	12 @ 1/0 AWG
Voltage @ Frequency:	460.0 V @ 60 HZ	Motor Type:	A44208M
XP Class and Group:	None	Mounting Arrangement:	F1
XP Division:	Not Applicable	Power Factor:	92
Agency Approvals:	CCSA US	Product Family:	General Industrial
	CSA EEV	Pulley End Bearing Type:	Ball
Auxillary Box:	No Auxillary Box	Pulley Face Code:	Standard
Base Indicator:	Rigid	Shaft Ground Indicator:	No Shaft Grounding
Bearing Grease Type:	Polyrex EM (-20F +300F)	Shaft Rotation:	Reversible
Current @ Voltage:	420.000 A @ 460.0 V	Shaft Slinger Indicator:	Shaft Slinger
Design Code:	B	Speed Code:	Single Speed
Drip Cover:	No Drip Cover	Motor Standards:	NEMA
Duty Rating:	CONT	Starting Method:	Direct on line

Feedback Device:	NO FEEDBACK	Thermal Device - Bearing:	None
		Thermal Device - Winding:	None

Nameplate NP2496L

MOBIL POLYREX EM

Nameplate NP2349L											
SPEC NO.	P44G4028			CAT.NO.	EM44402T-4			FRAME	L449TS		
HP	400	VOLTS	460	PHASE	3	DESIGN	B	TYPE			
RPM	3570	AMPS	420	HZ	60	AMB	40	SF	1.15		
DRIVE END BEARING	65BC03J30X			DUTY	CONT		INSUL.CLASS	F			
OPP D.E. BEARING	65BC03J30X			ENCL	TEFC		CODE	G			
SER.NO.				POWER FACTOR	92		NEMA-NOM-EFFICIENCY	96.2			
							MAX CORR KVAR	25		GUARANTEED EFFICIENCY	95.4
							NEMA NOM/CSA QUOTED EFF				
							MOTOR WEIGHT				

Parts List		
Part Number	Description	Quantity
SA339798	SA P44G4028	1.000 EA
RA328135	RA P44G4028	1.000 EA
421948051	LABEL, MYLAR	1.000 EA
NP2496L	MOTOR LUBE NAMEPLATE	1.000 EA
000613006PU	N/P (RELEASE QTY 10,000) UL CSA LABEL	1.000 EA
000692000FF	N/P	1.000 EA
000692000VD	LABEL WARNING	1.000 EA
NP2349L	SUPER-E ,SS, CSA, CSA SUPER-E	1.000 EA
089490097A	BRKT 089490102WCA	1.000 EA
415072001B	CLAMP	1.000 EA
083199082RA	G28 SHORT FAN COVER W/BAFFLE ASSEMBLY	1.000 EA
034180014DA	KEY 1/4X1/4X1-3/4 L	1.000 EA
412118006A	DRAIN	1.000 EA
078548001R	FAN KB 234/150 (84) 400	1.000 EA
004824015A	GREASE POLYREX EM	0.540 LB
032018020FK	HHCS 3/4-10X2-1/2 PLTD.	4.000 EA
032018008CK	HHCS 3/8-16X1L PLATED	4.000 EA
032018020CK	HHCS 3/8-16X2-1/2 PLTD.	3.000 EA
415096002A	CPLG 1/8 HEX TYPE	1.000 EA
415045002E	SLGR	1.000 EA
410700004F	WSHR	1.000 EA
035000001G	GREASE RELIEF FITTING, ALEMITE 317400	1.000 EA
034017014AB	LCKW 3/8 STD. PLATED	4.000 EA
034530072AB	P/NIP 1/8X9"L Threaded both ends	1.000 EA

Parts List (continued)		
Part Number	Description	Quantity
034630002AB	CPLG 1/4" PLATED	1.000 EA
034690005AB	PPLG 3/4 PLATED	2.000 EA
034530072BB	PIPE NIPPLE,DE - 440-BS	1.000 EA
034600001AA	BUSH 1/4TO1/8 BLACK	1.000 EA
032620016LA	SOCKET SET SCREW-449	3.000 EA
034630002AB	CPLG 1/4" PLATED	1.000 EA
034530044BB	P/NIP 1/4X5-1/2L PLT	1.000 EA
702623012A	THERMAL BARRIER, G28	1.000 EA
032018004BK	HHCS 5/16-18X1/2 PLATED	3.000 EA
034017013AB	LCKW 5/16 STD. PLATED	3.000 EA
034600001AA	BUSH 1/4TO1/8 BLACK	1.000 EA
089490097A	BRKT 089490102WCA	1.000 EA
032018020FK	HHCS 3/4-10X2-1/2 PLTD.	4.000 EA
032018022CK	HHCS 3/8-16X2-3/4 PLTD	3.000 EA
415045002E	SLGR	1.000 EA
412118006A	DRAIN	1.000 EA
034530044AB	P/NIP 1/8X5-1/2L GALV.	1.000 EA
415096002A	CPLG 1/8 HEX TYPE	1.000 EA
035000001G	GREASE RELIEF FITTING, ALEMITE 317400	1.000 EA
415915007K	GASK, 26" LAC	1.000 EA
406056008A	GASKET, TERBD 440	1.000 EA
032018008DK	HHCS 1/2-13X1 PLATED	4.000 EA
702616012RE	CONDUIT BOX	1.000 EA
406099000A	PLUG - FAN COVER 320-440	1.000 EA

Product Information Packet: EM44402T-4 - 400HP,3570RPM,3PH,60HZ,L449TS,TEFC,F1

MG1025N19	WILKO 778.50 BLUE GREEN - 55 GAL DRUMS	0.500 GA
033775004EA	DRSCR #6-1/4 304 S.S.	2.000 EA
034180024HA	KEY 5/8X5/8X3 L	1.000 EA
604797032	447/449 WIDE SHIPPING SKID	1.000 EA
032510026D	CARRIAGE BOLT - 440	2.000 EA
034001016AB	WSHR .562ID 1.375OD .109	2.000 EA
034001014AB	FLAT WASHER 3/8"PLATED	2.000 EA
033300014AC	HEX NUT, SHIPPING - 400	2.000 EA
604799003C	PLASTIC BAG 42X32X46	1.000 EA
034690001AB	1/8" NPT SQHDPLG	1.000 EA
034690001AB	1/8" NPT SQHDPLG	1.000 EA

REL. S.O.	FRAME	HP	TYPE	PHASE/HERTZ	RPM	VOLTS
	L449TS	400	P	3/60	3570	460
AMPS	DUTY	AMB °C/INSUL.	S.F.	NEMA DESIGN	CODE LETTER	ENCL.
420	CONT	40/F	1.15	B	G	TEFC
E/S	ROTOR	TEST S.O.	TEST DATE	STATOR RES (25 °C OHMS (BETWEEN LINES))		
-	418143-016-MEQ	---	---	.00612		

PERFORMANCE

LOAD	HP	AMPERES	RPM	POWER FACTOR %	EFFICIENCY %
NO LOAD	0	80.7	3600	6.77	0
1/4	100	128	3593	77.8	94.0
2/4	200	215	3586	90.7	96.1
3/4	300	314	3579	92.7	96.5
4/4	400	420	3571	92.4	96.4
5/4	500	529	3563	92.0	96.1

SPEED TORQUE

	RPM	TORQUE % FULL LOAD	TORQUE LB.-FT.	AMPERES
LOCKED ROTOR	0	206	1208	2862
PULL UP	1670	167	983	2517
BREAKDOWN	3464	264	1554	1697
FULL LOAD	3571	100	588	420

AMPERES SHOWN FOR 460. VOLT CONNECTION. IF OTHER VOLTAGE CONNECTIONS ARE AVAILABLE, THE AMPERES WILL VARY INVERSELY WITH THE RATED VOLTAGE

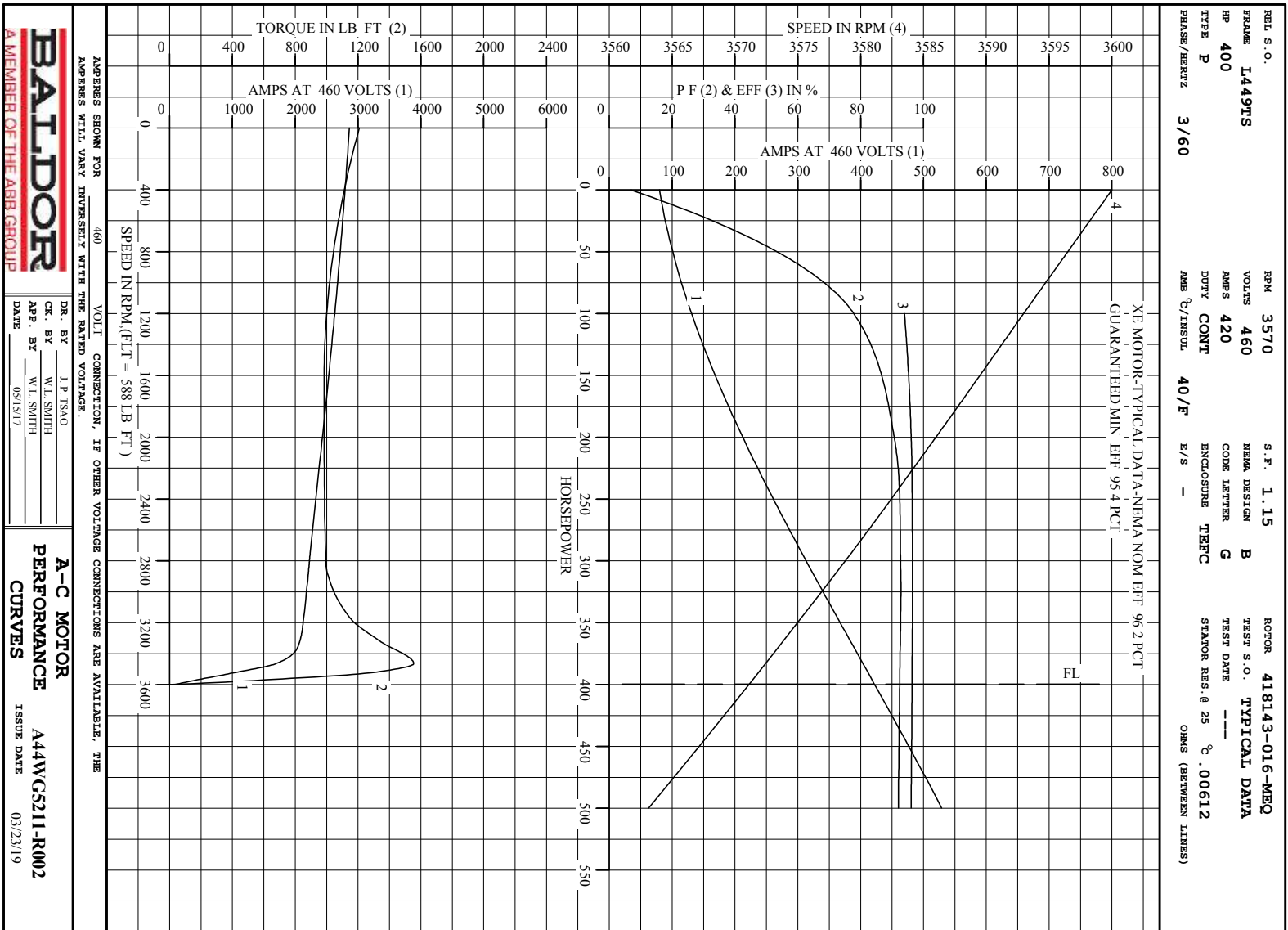
REMARKS: TYPICAL DATA

XE MOTOR-TYPICAL DATA-NEMA NOM. EFF. 96.2 PCT.
GUARANTEED MIN. EFF. 95.4 PCT.



DR. BY J. P. TSNO
CR. BY W.L. SMITH
APP. BY W.L. SMITH
DATE 05/15/17

A-C MOTOR PERFORMANCE DATA
A44WG5211-R002
ISSUE DATE 03/23/19

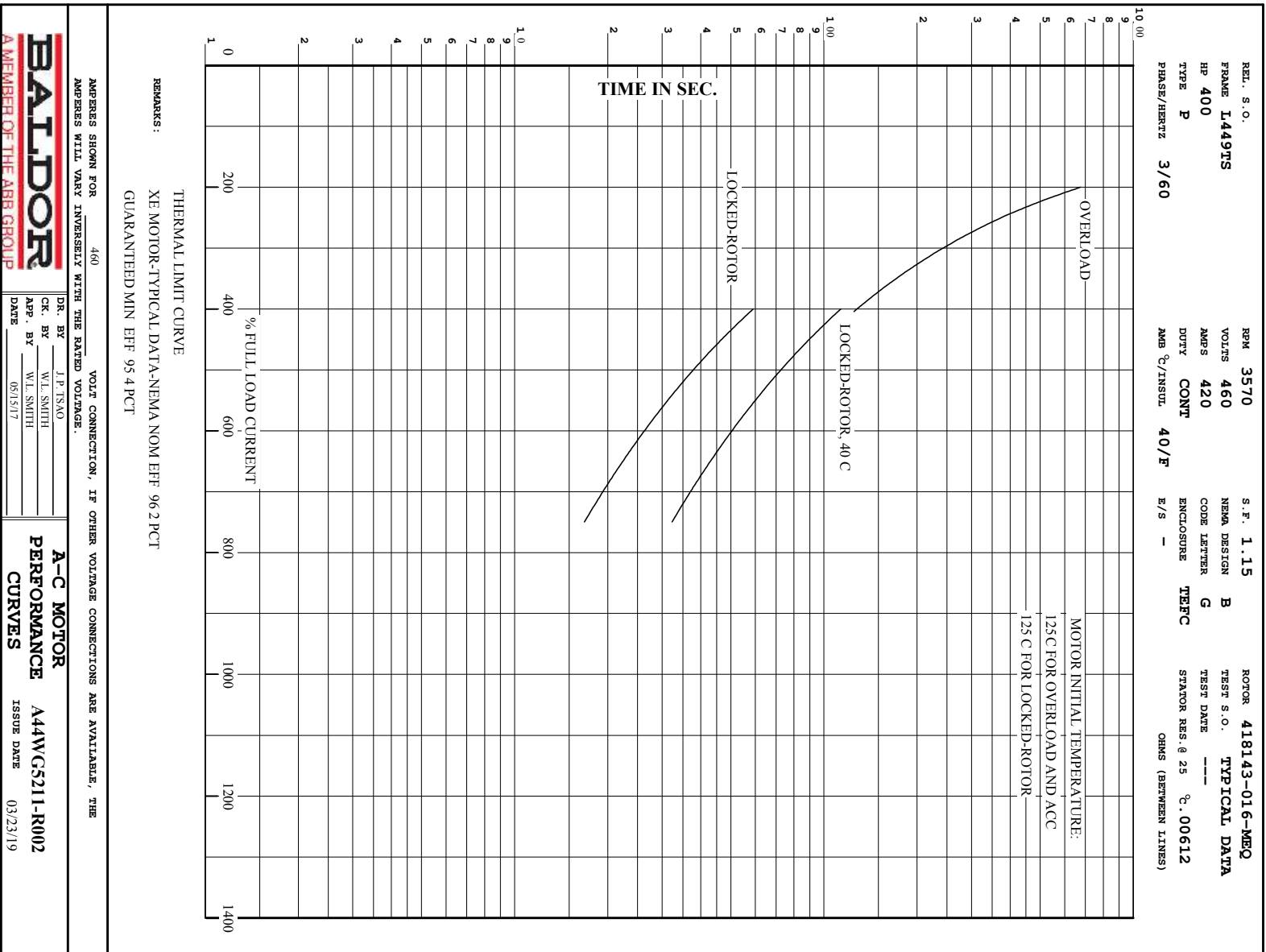


BALDOR
A MEMBER OF THE ABB GROUP

DR. BY J. P. TSAO
 CK. BY W. L. SMITH
 APP. BY W. L. SMITH
 DATE 05/15/17

A-C MOTOR
PERFORMANCE
CURVES
A44WG5211-R002
 ISSUE DATE 03/23/19

Printed on 3/23/19 17:10 @ bengap01.baldor.com



BALDOR
A MEMBER OF THE ABB GROUP

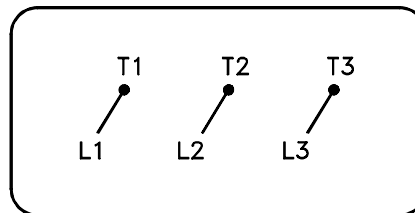
DR. BY J.P. TSAO
CK. BY W.L. SMITH
APP. BY W.L. SMITH
DATE 06/15/17

A-C MOTOR
PERFORMANCE
CURVES

A44WGS211-R002
ISSUE DATE 03/23/19

416820-036

A-C MOTOR
 CONNECTION DIAGRAM
 STANDARD 3 LEAD CONNECTED



(N.P. 1575-BA)

416820-036

REV. DESC: LOADED TO BUS, C/R 335225		
REV. LTR: -	VERSION: 00	TDR: 000000538207
FILE: \MGA\00000\682	REVISED: 11:54:06 04/30/2010	
MTL: -	BY: RAGRA	

BALDOR

CONN DIAG - STANDARD 3 LEAD

SH 1 of 1

Marketing maintained PDF of MN408:

[MN408?ManNumber=MN408](#)

Marketing maintained PDF of MN416:

[MN416?ManNumber=MN416](#)